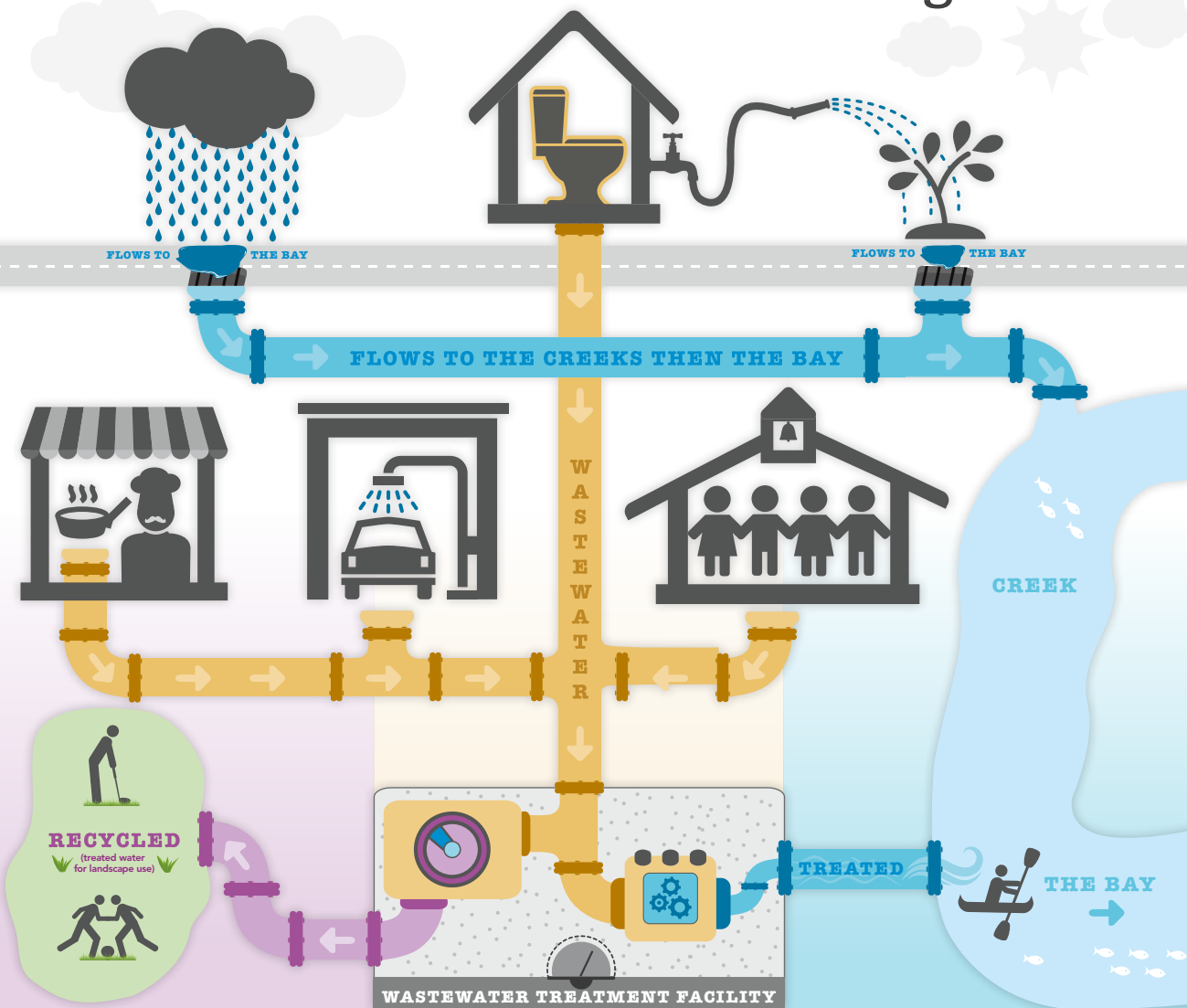


beyond the drain.

where does our water go?



Recycled water uses:

- Landscape irrigation (parks, golf courses)
- Construction dust control
- Fountains
- Future dual plumbing

Wastewater sources:

- Homes: sinks, toilets, showers, laundry
- Businesses: kitchens, cleaning, restrooms
- Industry: manufacturing, cooling towers

Stormwater sources:

- Water that flows to storm drains including:
 - » Over irrigation
 - » Rainwater
 - » Car washing in the street

LEARN MORE at cleanbay.org about the Regional Water Quality Control Plant's efforts to prevent pollution in local creeks and San Francisco Bay.

Check out our school programs, tours, guest speakers, workshops, volunteer opportunities, disposal information and more. Or call **650.329.2122**.



REGIONAL
WATER QUALITY
CONTROL PLANT

Individuals with disabilities who require accommodations to access City facilities, services or programs, or who would like information on the City's compliance with the Americans with Disabilities Act (ADA) of 1990, may contact the City's ADA Coordinator at (650) 329-2550 (voice) or email ada@cityofpaloalto.org

11/15 Printed on 100% post-consumer recycled paper, bleached without chlorine.



CITY OF
**PALO
ALTO**