



Preventing Storm Drain Pollution

Tips for Recreation Vehicle (RV) Owners

How RVs affect the San Francisco Bay (Bay)

When trash and septic waste are washed into the street, storm drain inlets, and storm drain system, they flow to our local waterways, the Bay, and eventually the ocean without any cleaning or filtering. Federal, State, and local regulations prohibit discharge of anything but rain water in the storm drain.

Help protect the Bay and local creeks by following these guidelines.



Only rain down the storm drain

Wastewater Tank Servicing

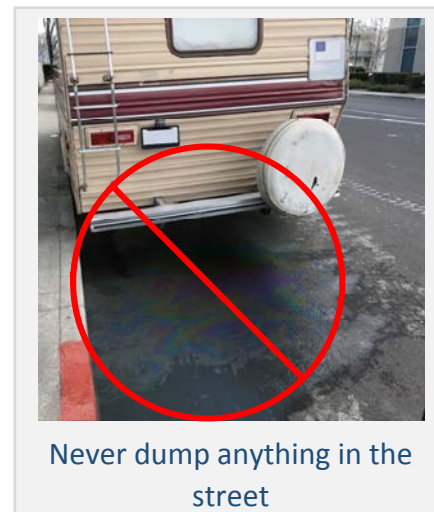
- **NEVER** dispose of wastewater/sewage into the street, gutter, or storm drain.
- Properly dispose of all wastewater/sewage at appropriate disposal locations. *See the reverse side for locations in and near Santa Clara Valley.*
- Do not overfill waste tanks. Service tanks periodically to avoid leaks.

Trash Disposal

- **NEVER** dispose of trash in the storm drain or street.
- Properly dispose of trash in a trash bag or enclosed trash can.

Vehicle and Equipment Leaks

- Periodically check under the engine for leaks.
- Use drip pans for any leaks from the waste tank, engine, propane, refrigeration equipment, etc. and repair leaks immediately.
- Ensure that all caps are properly installed, closed, and fit tightly.
- Have the propane system leak-tested annually.



Never dump anything in the street

Possible Fees

Dumping wastewater into the street, gutter, or storm drain OR dumping trash in any area not designated for trash disposal OR vehicle/equipment leaks/spills may result in a fine and assessment of any associated cleanup costs.

Parking limitations apply in certain cities, too. Check local jurisdictions for parking limits.

For more information about Stormwater Pollution Prevention

Dump Stations

Check sanidumps.com for more locations

Santa Clara County Fairgrounds

344 Tully Road
San Jose, CA 95111
(408) 494-3100

Trailer Villa RV Park

3401 East Bayshore Road
Redwood City, CA 94063
(800) 366-7880

Maple Leaf RV Park

15200 Monterey Road
Morgan Hill, CA 95037
(408) 776-1818

Sanborn County Park

16055 Sanborn Road
Saratoga, CA 94070
(408) 867-9959

Family RV Dealership

19380 Monterey Road
Morgan Hill, CA 95037
(408) 612-4700

Del Valle Family Campground

7000 Del Valle Road
Livermore, CA 94550
(888) 327-2757

Honey Bucket California

Mobile RV Waste Tank Pumping
(800) 325-2371

Saratoga Springs RV Park

22801 Big Basin Way
Saratoga, CA 95070
(408) 867-3016

Half Moon Bay State Beach

Half Moon Bay, CA 94019
(650) 726-8819

Septic Tank Pumpers and Haulers

A-1 Septic Tank Services

(510) 886-4455
www.a1tank.net

California Site Services

(800) 682-3449
www.calsiteservices.com

Nor Cal Portable Services, Inc.

(888) 689-0186
www.norcalportableservices.com

Aaron's Septic Tank Service

(408) 371-2350
www.aaronseptic.com

Crown Sanitation

(831) 638-0290
www.crown06.com

United Site Services

(408) 284-4440
www.unitedsiteservices.com

Able Septic Tank Service

(408) 377-9990
www.ableseptic.com

Morton Septic Services, Inc.

(408) 842-2942
www.mortonsepticservice.com

Valley Services

(408) 297-5404
www.valleyservices.biz

Waste Management Portable Services

(925) 935-8900
www.wm.com

Stormwater Pollution Control Agencies

For more information contact your local Stormwater Pollution Control Agency

Campbell, Los Gatos, Monte Sereno, Saratoga	(408) 354-5385
Cupertino	(408) 777-3354
Los Altos	(650) 947-2770
Los Altos Hills	(650) 941-7222
Milpitas	(408) 586-3365
Mountain View	(650) 903-6378
Palo Alto	(650) 329-2413
San José	(408) 945-3000
Santa Clara	(408) 615-3080
Sunnyvale	(408) 730-7260
Santa Clara Unincorporated County	(408) 918-4600